



Gosport Borough

Housing Completions

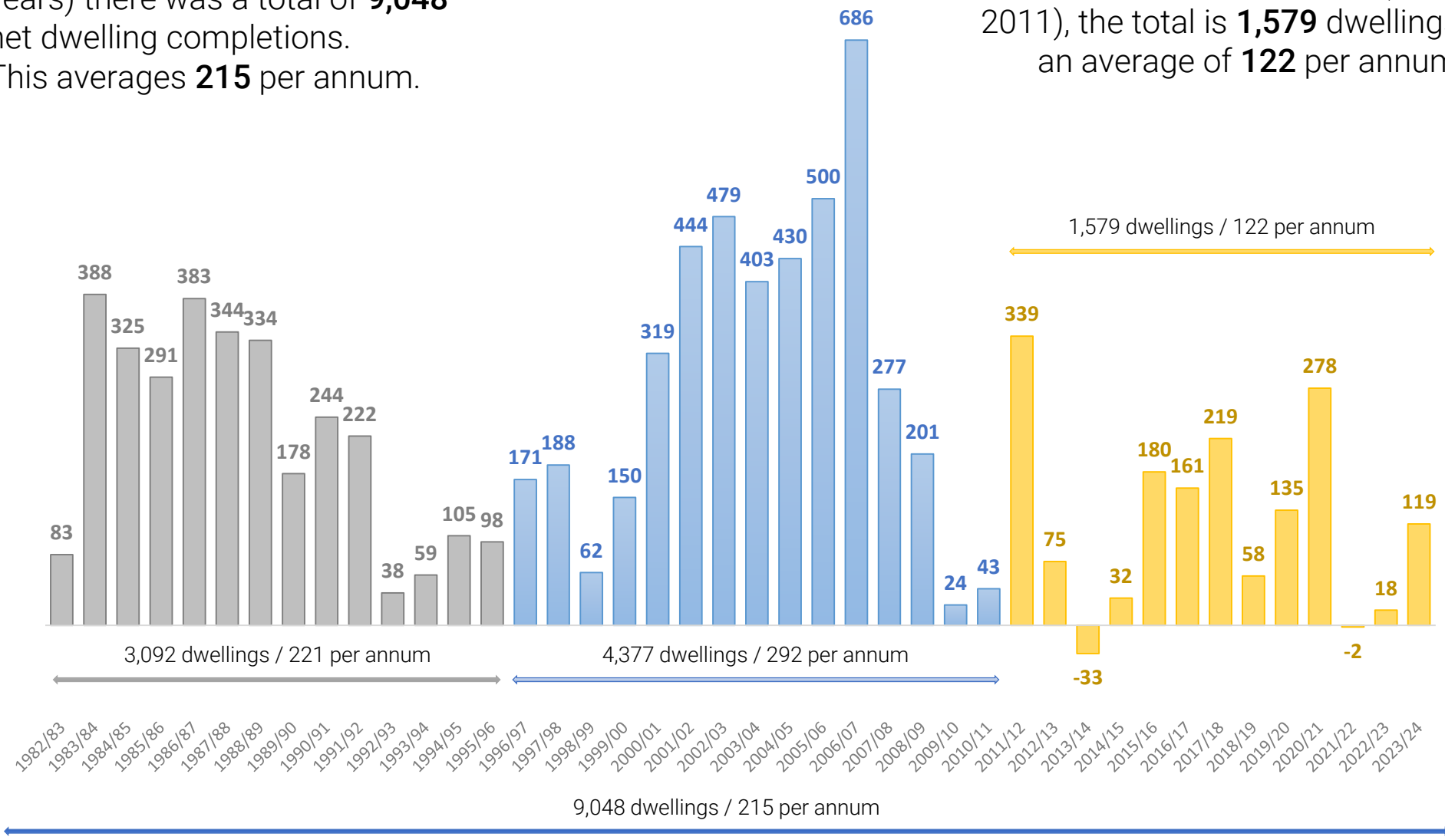
Up to 31 March 2024

Net housing completions since 1982

Between 1982 and 2024 (42 years) there was a total of **9,048** net dwelling completions. This averages **215** per annum.

Between 1996 and 2011 (15 years – previous local plan period) there was a total of **4,377** net dwelling completions, **292** per annum.

In the current plan period (since 2011), the total is **1,579** dwellings, an average of **122** per annum.



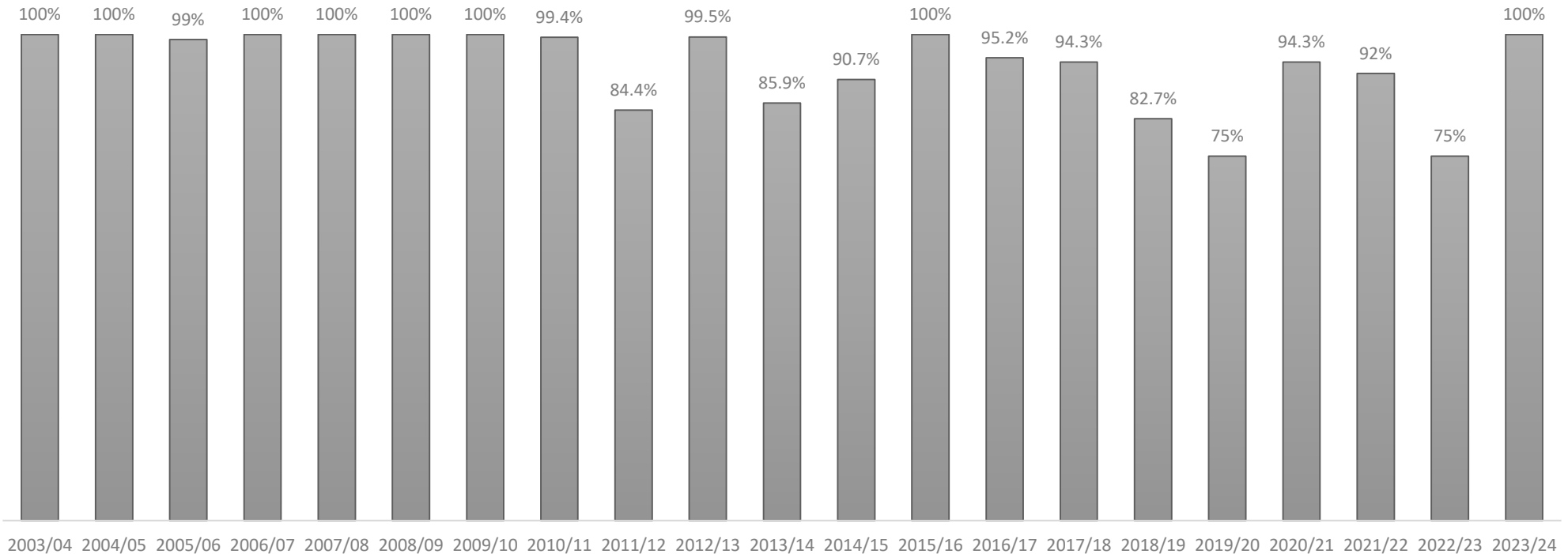
Previously Developed Land

The majority of new dwellings in Gosport Borough are built on Previously Developed Land (PDL).

Between 2003 and 2011, **99.8%** of completions (gross) were on PDL. Between 2011 and 2024, **89.9%** were on PDL.

93.7%
on PDL since 2003

Percent of gross completions built on Previously Developed Land
2003/04 to 2023/24



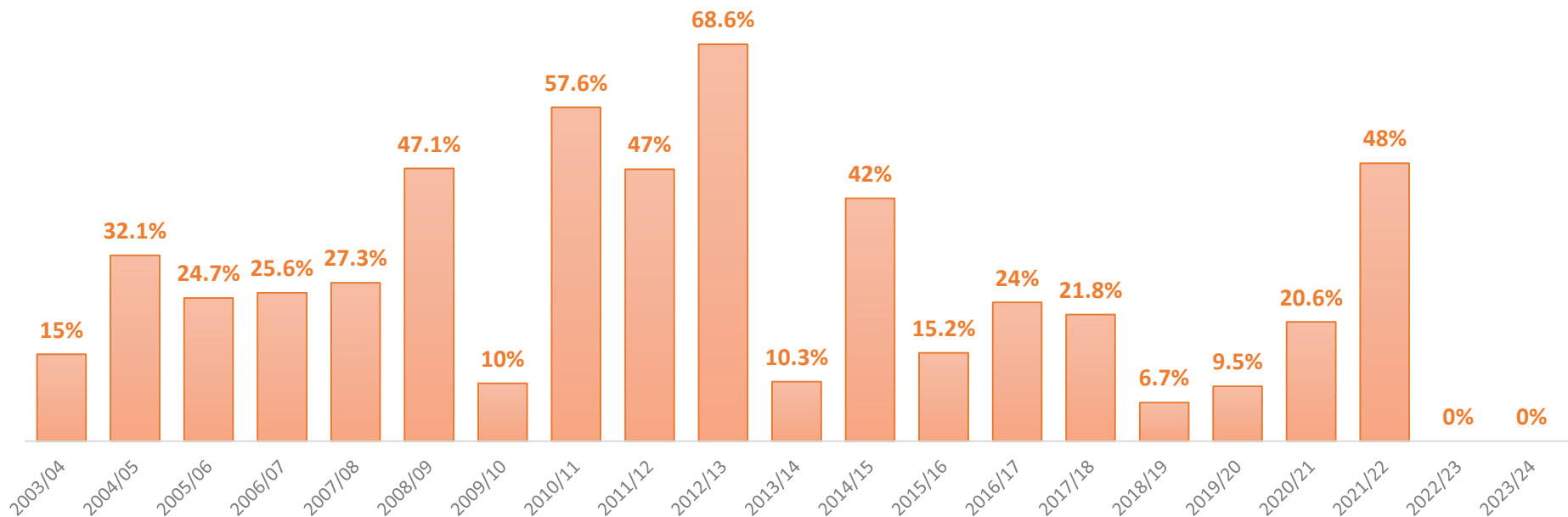
Affordable dwellings

On average between 2003 and 2024, **26.3%** of all dwelling completions (gross) are classed as affordable.

26.3%
affordable since 2003

In the current plan period, 2011 to 2024, **24.1%** of completions have been affordable housing.

Percent of gross completions that are affordable
2003/04 to 2023/24

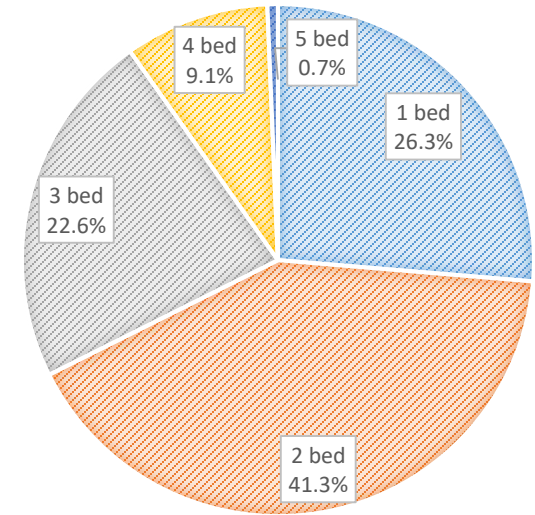


Dwellings by bedroom type

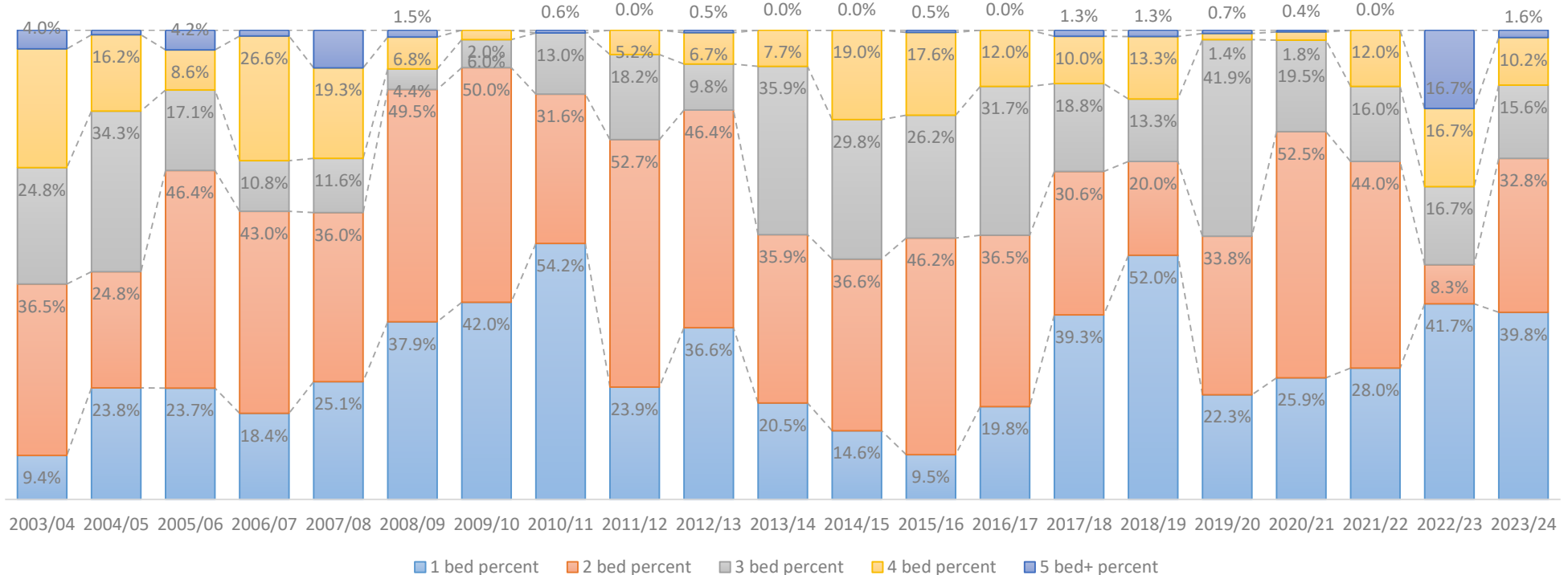
The most common bedroom type since 2003 is 2 bed, accounting for **41.3%** of dwellings.

In the 5 years between 2003 and 2008, **81** 5 bed's were built. Between 2008 and 2024, only **18** were built.

Bedroom type
2011 to 2024



Gross completions by bedroom type
2003/04 to 2023/24



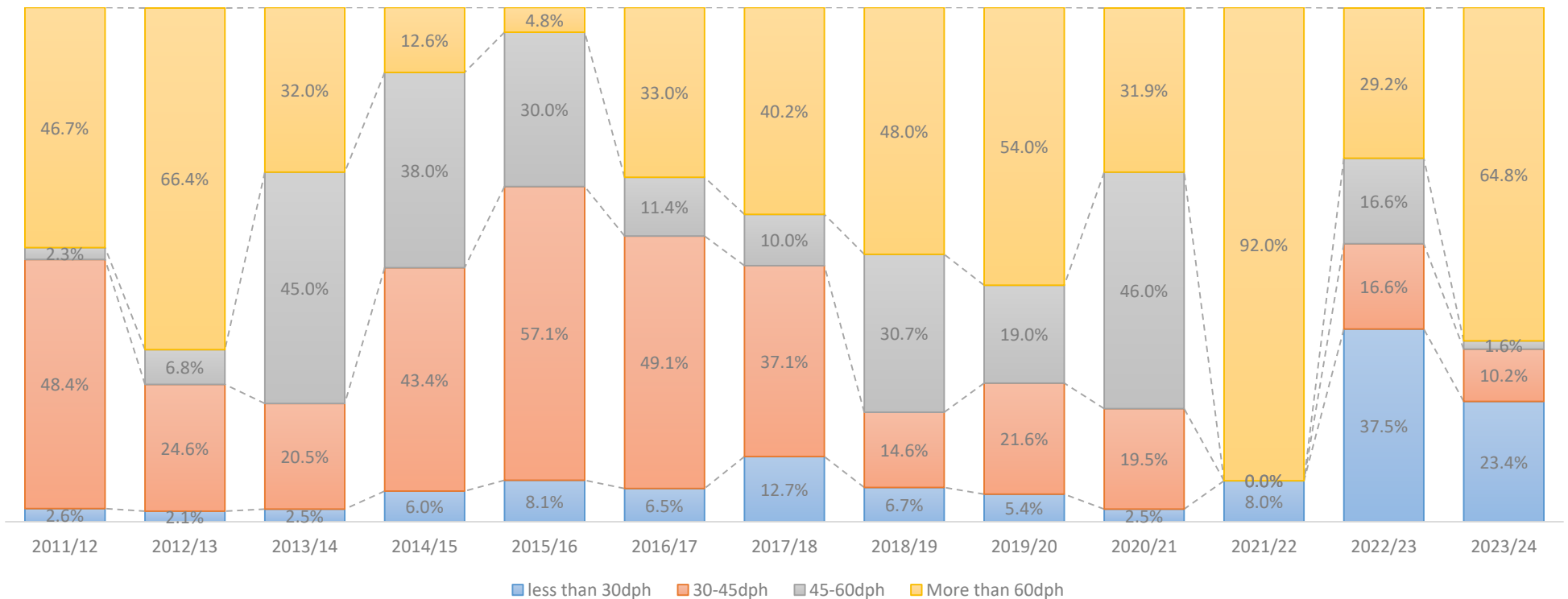
Density of dwelling completions

42.7% of all dwelling completions (gross) since 2011 have been built at more than 60 dwellings per hectare (dph).

42.7%
built at more than
60dph

27.9% have been built at 30-45dph, **19.8%** at 45-60dph, and **9.5%** at less than 30dph.

Dwellings per hectare (as a percentage of all gross completions)



Hampshire completions

Net dwelling completions by local authority
2001/02 to 2022/23 (MHCLG, Table 122)

Between 2001 and 2023 a total of **134,821** net dwellings have been completed in Hampshire.

5,144 (3.8%) of these have been in Gosport Borough.

Gosport Borough represents **0.7%** of the Hampshire land area (including Portsmouth and Southampton) and has **4.7%** of the total population.

