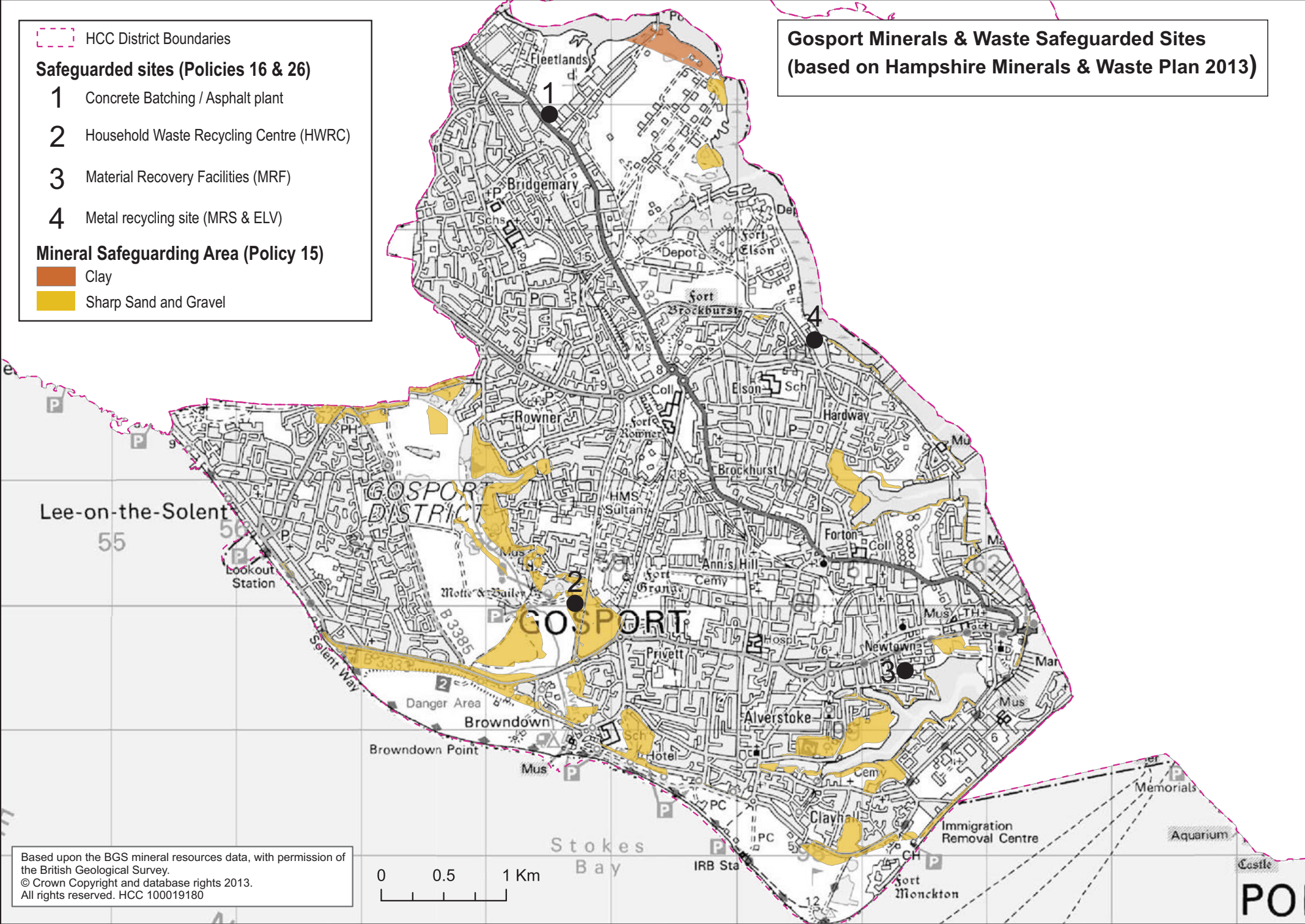
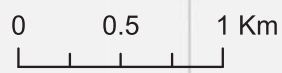


**Gosport Minerals & Waste Safeguarded Sites
(based on Hampshire Minerals & Waste Plan 2013)**

- HCC District Boundaries
- Safeguarded sites (Policies 16 & 26)**
- 1 Concrete Batching / Asphalt plant
- 2 Household Waste Recycling Centre (HWRC)
- 3 Material Recovery Facilities (MRF)
- 4 Metal recycling site (MRS & ELV)
- Mineral Safeguarding Area (Policy 15)**
- Clay
- Sharp Sand and Gravel



Based upon the BGS mineral resources data, with permission of the British Geological Survey.
© Crown Copyright and database rights 2013.
All rights reserved. HCC 100019180



POI